

Carottage

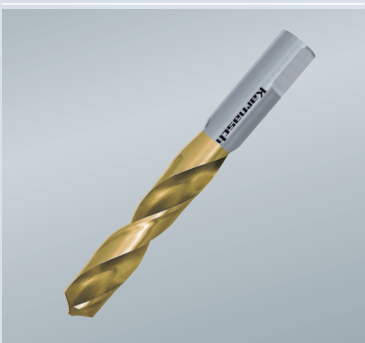
Core drilling



Ø 12-50 mm
Ø 15/32" - 1-31/32"

Perçage hélicoïdal

Twist drilling



Ø 3-23 mm
Ø 1/8" - 29/32"

Chanfreinage

Countersinking



Ø 10-40 mm
Ø 3/8" - 1-9/16"

Vitesse à pleine puissance

Speed full load

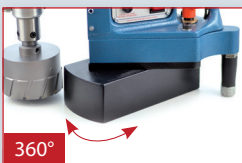
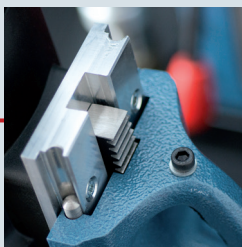
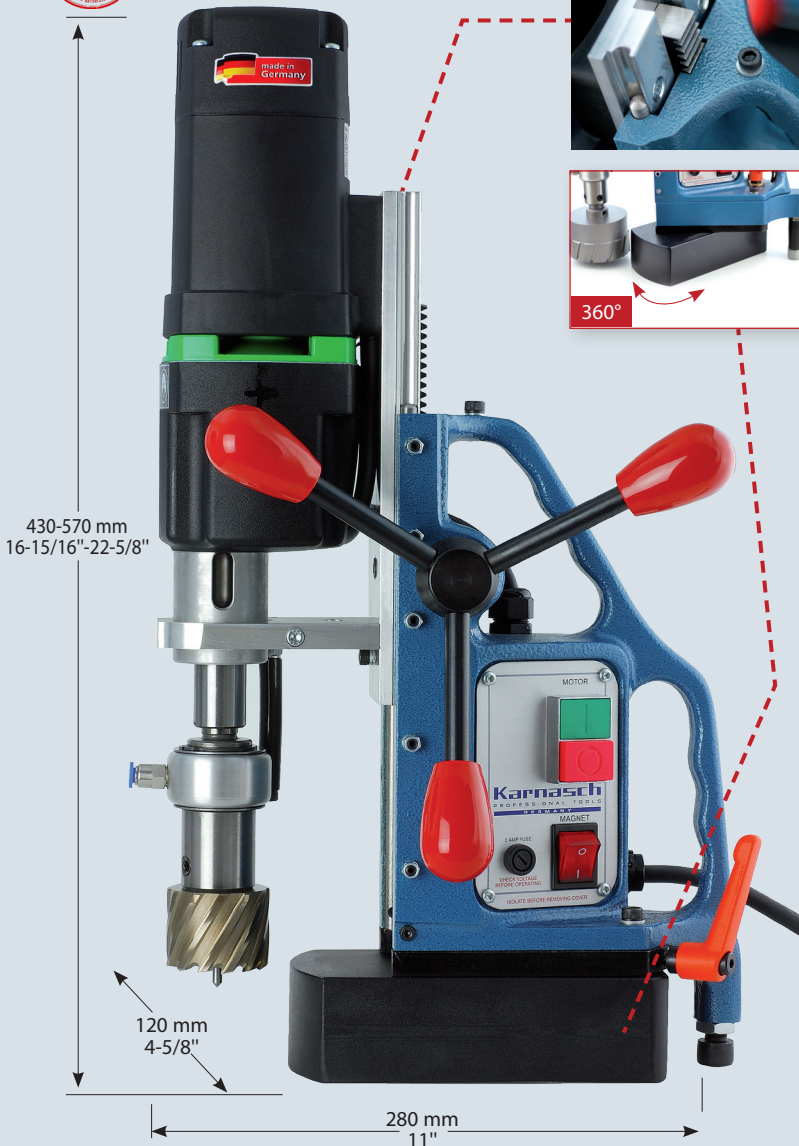


Engrenages
Gear stages

1 = 250 min⁻¹

2 = 450 min⁻¹

Voir notre catalogue principal - See main catalogue



Caractéristiques spéciales
Special Characteristics
Especialidades

Grâce au système à double glissière "HEAVY-DUTY", la machine peut facilement percer jusqu'à **110 mm (4-1/4")** de profondeur. (Description à la page 3).

Thanks to "HEAVY-DUTY" Twin Rail Slide System easily **110 mm (4-1/4")** cutting depth possible. (Description on page 3).



Sensor

Puissance du moteur Motor Power	1150 watts
Porte-outil Tool holder	CM2 + Weldon 19 mm (3/4") MT2 + Weldon 19 mm (3/4")
Lubrification Coolant supply	Interne, automatique Internal, automatically
Course Stroke	180 mm (6-31/32")
Tension Voltage	110 volts (230 volts sur demande) 110 volts (230 volts on request)
Adhérence magnétique Magnetic adhesion	1250 kg (2755 lbs)
Base magnétique Magnetic base	Pivotante Swivel rotates 360° 85 x 170 mm
Poids Weight	13,50 kg (29,80 lbs)